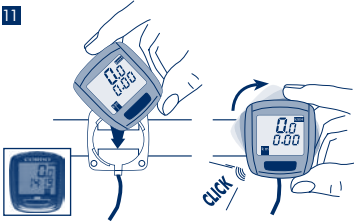
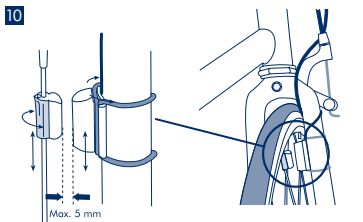
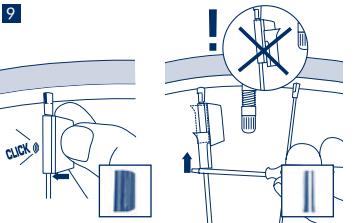
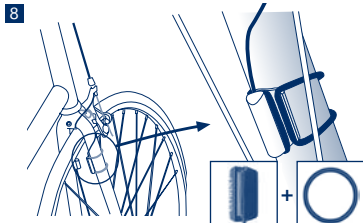
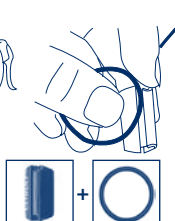
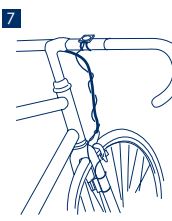
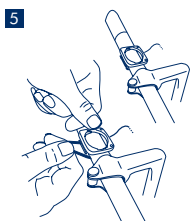
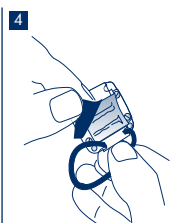
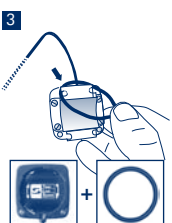
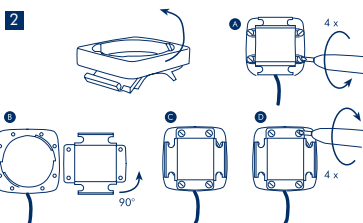
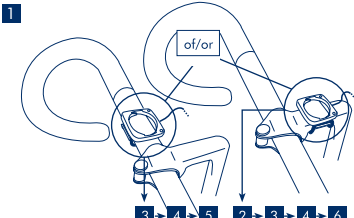




Inhoud/Content



Functies

- Dagafstand
- Rit-tijd
- Totale afstand
- Klok
- Snelheid

Mode/Reset

- Om functies op te roepen.
- Nulstelling (0) van de functies (dagafstand) en (dag-fietstijd).

Functions

- Trip distance
- Ride time
- Total distance
- Clock
- Speed

Mode/Reset

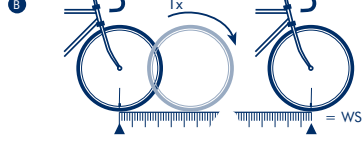
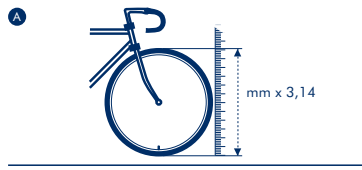
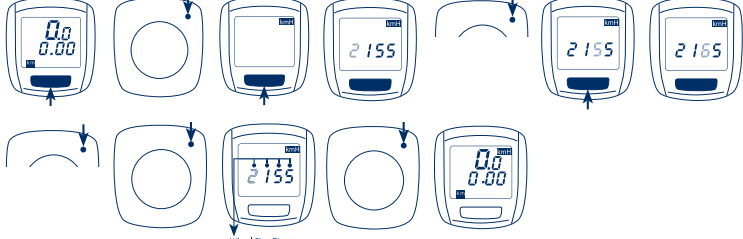
- To retrieve the functions.
- To put back (trip distance) and (trip time) to zero.

Wielomtrek instellen

- MODE indrukken tot (Dagafstand) / (Rit-tijd) in de display verschijnt.
- Achterzijde van de computer SET 3 sec. indrukken.
- Met MODE KMH of MPH instellen (bij KMH klok 24h/MPH klok 12h).
- Met SET bevestigen.
- De standaard instelling van de wielomtrek knippert.
- Met MODE de juiste omtrek in mm aangeven.
- Met SET elk volgend cijfer bevestigen.
- In tabel C "Wheel Size Chart" uw juiste bandenmaat zoeken en de gegevens ingeven zoals aangegeven (zie volgend nr).
- Alternatief: WS berekenen (Tabel A of Tabel B).
- Met SET bevestigen. Terug naar de startmodus.

Set wheel size

- Press MODE until (Trip distance) / (Trip time) appears on display.
- Press SET on the back for 3 sec. with a pointed tool.
- Enter KMH or MPH with MODE (clock at KMH 24h-display, at MPH 12h-display!).
- Confirm with SET.
- The display shows the input standard of wheel size. Choose the number with MODE.
- Confirm with SET and go to the next position.
- Find out the number corresponding to your wheel size out of table C "Wheel Size Chart". Enter this number.
- Alternative: calculate/determine WS (Tab. A or Tab. B).
- Confirm and quit with SET after the last input.




ETRTO 12 1/2 x 1.75		WS km/h
47-305	16x1.75x2	1272
47-406	20x1.75x2	1590
37-540	24x1 3/8 A	1948
47-507	24x1.75x2	1907
23-571	26x1	1973
40-559	26x1.5	2026
44-559	26x1.5	2051
47-559	26x1.75x2	2070
50-559	26x1.9	2089
54-559	26x2.00	2114
57-559	26x2.125	2133
37-590	26x1 3/8	2105
37-584	26x1 3/8x1 1/2	2086
20-571	26x3/4	1954


ETRTO 12 1/2 x 1.75		WS km/h
32-630	27x1 1/4	2199
28-630	27x1 1/4 Fifty	2174
40-622	28x1.5	2224
47-622	28x1.75	2268
40-635	28x1 1/2	2265
37-622	28x1 3/8x1 5/8	2205
18-622	700x18C	2102
20-622	700x20C	2114
23-622	700x23C	2133
25-622	700x25C	2146
28-622	700x28C	2149
32-622	700x32C	2174
37-622	700x35C	2205
40-622	700x40C	2224

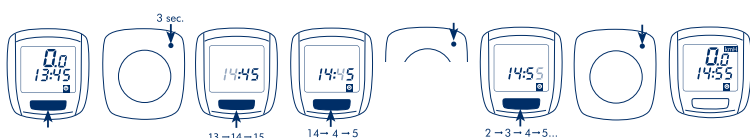
Fietscomputer CRD 4

Instellen van de klok



- Druk op MODE tot  (KLOK) verschijnt
- Aan de achterzijde SET 3 sec ingedrukt houden.
- Met MODE uren instellen.
- Met MODE van uren naar minuten wisselen.
- Met RESET minuten instellen en met SET bevestigen, instel modus verlaten.

Set clock



- Press MODE until  (CLOCK) appears.
- Press SET on the back for 3 sec. with a pointed tool.
- Enter the hours with MODE.
- Confirm with SET and go to minutes.
- Enter minutes with MODE. Confirm and quit with SET.

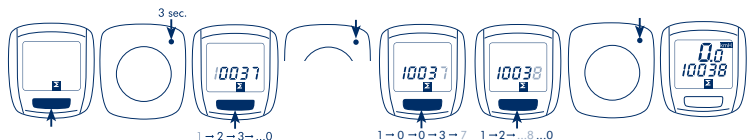


Totaal afstand

- MODE indrukken tot  (Totaal-afstand) verschijnt.
- Achterzijde: SET 3 sec indrukken ( knippert).
- Met MODE cijfers instellen.
- Met SET bevestigen enz.
- Met MODE getallen instellen. Na het laatste cijfer met SET bevestigen.

Total distance



- Press MODE until  (total distance) appears.
- Press SET on the back for 3 sec ( flashes).
- Enter number with MODE.
- Confirm with SET and go to the next position.
- Enter next number with MODE. Confirm and quit with SET after the last position.



Reset de Display

- MODE langer dan 1 seconde ingedrukt houden.
- Melding knippert. Na 2,5 seconde wordt  (Dagafstand) en  (Rit-tijd) teruggezet op 0.

Reset the displays

- Keep MODE pressed down for longer than 1 second.
- Display flashes. After 2.5 seconds  (Trip distance) and  (Ride time) are reset to 0.



Algemene opmerkingen

Batterij: 1 Lithium type 2032.3V. Wissel de batterijen na 3 jaar of eerder als de batterijen zwakker worden. Batterijdeksel met munt openen.

Batterijen wisselen:

- Voor het wisselen van de batterijen noteer de wielomtrek en de Totaalafstand.
- Let op Plus en Min, bij het afnemen van de deksel moet de Plus van de batterij zichtbaar zijn.
- Dichtingsring goed plaatsen.
- Na het verwisselen van de batterijen moeten de Totaalafstand, de Wielomtrek en Klok opnieuw worden ingesteld. De display gaat automatisch naar instelling van de Taal en Wielomtrek.

Garantie: Hier gelden de voorgeschreven garantie bepalingen.

General remarks

Battery: 1 lithium type 2032, 3V. Change batteries after appr. 3 years or as soon as the display fades. Open the battery compartment cover with a coin.

Changing batteries:

- Before changing take note of wheel size and total distance.
- Observe plus and minus. When battery compartment is open, you should see the plus pole!
- Refit rubber seal if detached.
- After change of batteries total distance, wheel size and clock must be re-entered. Set language is shown as first value on the display.

Warranty: The legal warranty regulations are valid.

Probleemoplossingen

KMH geen display aanduiding

- Metaal huls over de magneet geschoven? (beeld 9)
- Is de wielomtrek goed ingesteld?
- Is de computer goed in de houder bevestigd?
- Oxidatie van batterijen of contacten?
- Kabelbreuk ?
- Afstand magneet en sensor oké (max 5 mm)
- Is de magneet nog gemagnetiseerd?

Display geen beeld

- Batterij in orde?
- Batterij goed gemonteerd? Opletten! Plus/Min
- Batterij contacten oké? Zonodig voorzichtig bijbuigen

KMH klopt niet

- 2 magneten gemonteerd?
- Magneet goed gemonteerd?
- Wielomtrek goed ingesteld?

Display zwart

- Alleen bij directe zonnestraling >60°C. Bij afkoeling weer normaal!

Display traag

- Alleen bij temperaturen onder de 0°C. Bij hogere tempuren normaal beeld!

Problem solutions

No speed display

- Safety shell is pushed over the magnet (fig. 9)?
- Is the entered wheel size correct?
- Is the computer properly placed in the bracket?
- Did you check the contacts for oxidation/corrosion?
- Check the cable for damage.
- Did you check the distance? (max. 5 mm/0,2 inch)
- Is the magnet magnetized?

Display is empty

- Check the battery
- Did you put the battery in the right way? (pay attention to plus and minus)
- Check contacts, bend if necessary

KMH display is wrong

- Did you assemble 2 magnets?
- Is the magnet positioned in the right way?
- Did you enter the correct wheel size?

Display is black

- Only in direct sunlight (>60°C), under 60°C the display will return to normal.

Display is sluggish

- Only at temperatures under 0°C, display will be normal after warm up.

